

Moreton Bay Rail Link

Construction notice

Roadworks starting near you — Kinsellas Road East bridge

The Moreton Bay Rail Link is set to transform the region, providing a dedicated public transport link for one of the fastest growing areas in the country.

After decades of planning and discussion, Moreton Bay residents will finally see work starting on site when construction begins soon on a road-over-rail bridge in Mango Hill. These roadworks have been brought forward to ensure the local community remains connected once rail construction works start next year.

As part of these roadworks, a road-over-rail bridge will be built and Kinsellas Road East will be slightly realigned to the east of the current road.

Construction is scheduled to begin in July 2012 and is expected to be completed by mid-2013, weather permitting. More detailed information and dates will be available soon.

Features

The Kinsellas Road East bridge will be up to eight metres high over the future rail line. When completed, there will be one traffic lane in each direction, on-road cycle lanes, a pedestrian footpath, a new roundabout at the intersection with Mango Hill Boulevard, and a new connection at Kinsellas Road East with Anzac Avenue.

Working with you

The project team is committed to ensuring the safety of all residents and road users and minimising any potential impacts.

We will provide you with updates about project activities via doorknocks, letterbox drops, on our website, and through our project e-newsletter.

Subscribing to our e-newsletter is a reliable and convenient way to stay in touch. Please send your name and address to moretonbayrail@tmr.qld.gov.au.

Contact us

Phone: 1800 096 821*

Email: moretonbayrail@tmr.qld.gov.au

Website: www.moretonbayrail.qld.gov.au

Post: Moreton Bay Rail Link
Transport and Main Roads
Reply Paid 1549, Brisbane Qld 4001

* Free call from anywhere in Australia, call charges apply for calls from mobile phones and payphones.

What to expect

Site establishment (July 2012 to August 2012)

- Installation of site offices, facilities and fencing
- Vegetation clearing

Traffic (from July 2012)

- Kinsellas Road East will remain open to traffic throughout construction.
- For safety, some changes to traffic conditions will be required, including speed reductions and temporary stop-go arrangements to provide access for construction vehicles crossing Kinsellas Road East.
- Every effort will be made to minimise disruption to traffic.

Construction (from August 2012)

- Work involves extensive earthworks to excavate and transport soil from within the rail corridor (from as far west as Jasper Place) to the site to build embankments - this work will take several months.
- Piling - the process for drilling and constructing deep concrete piles for the bridge foundations.
- Installation of bridge beams to span the bridge.
- Roadworks at both ends of the new bridge approaches to tie in at Mango Hill Boulevard and at Anzac Avenue.
- Final road surfacing, line marking, safety barriers, fencing and signage to complete the work.

Working hours are Monday to Saturday, 6.30 am to 6:30 pm. Out-of-hours works may be required, and we will keep you informed in advance.

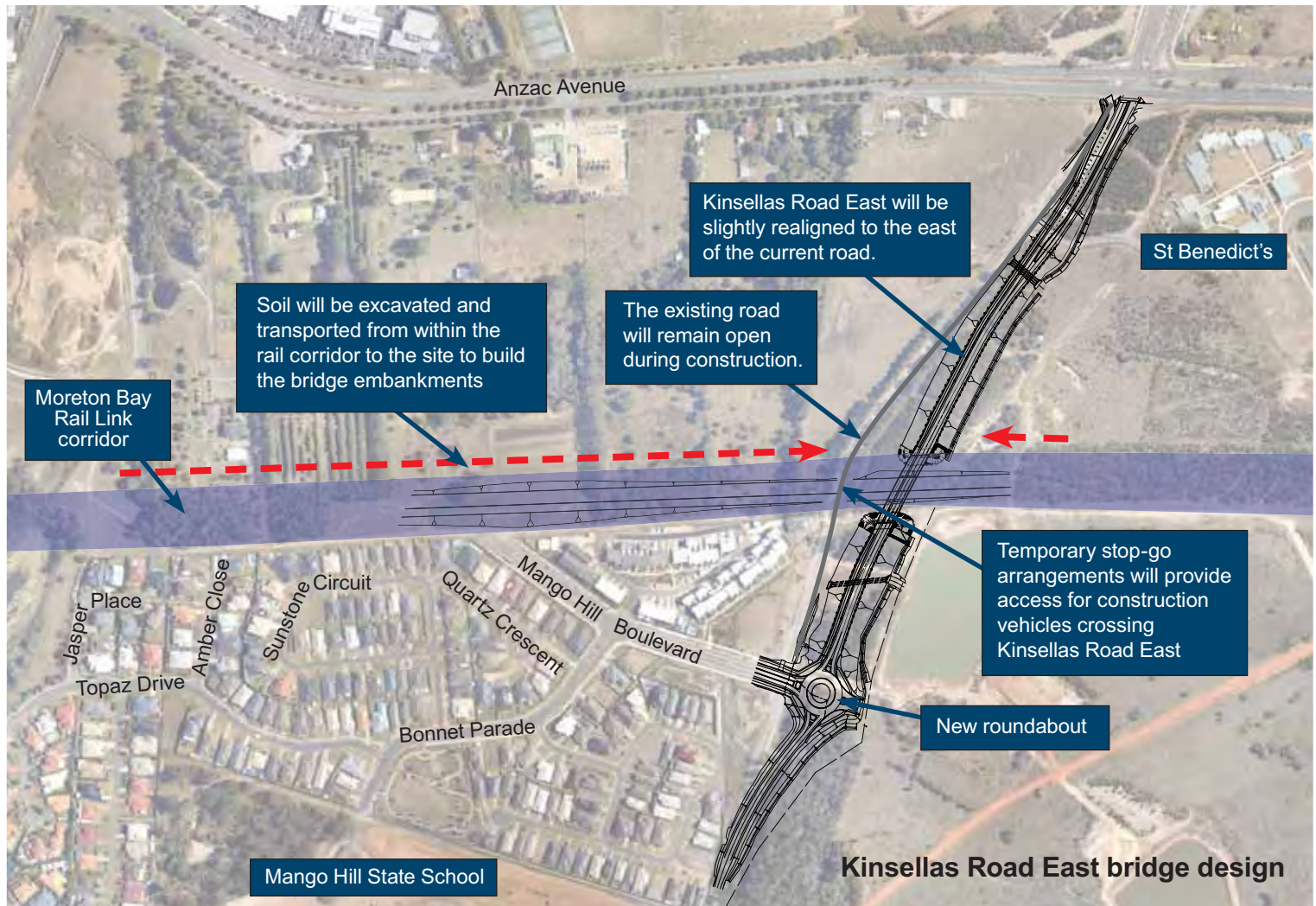


Australian Government

Nation Building Program



Moreton Bay Rail Link



Moreton Bay Rail Link

The Moreton Bay Rail Link will provide a 12.6km dual-track passenger rail line between Petrie and Kippa-Ring.

The new rail line will:

- provide a more reliable, economical, and faster alternative to driving to Brisbane's Central Business District during peak periods
- help reduce congestion on the road network, including the Bruce Highway, and free up capacity for journeys that can't be made using public transport
- provide sustainable and active transport options that reduce carbon emissions — every full train on the new line will take about 600 cars off the road
- provide better access to major employment centres both within and outside the Moreton Bay region
- help attract investment to the area and create business opportunities
- act as a catalyst for growth along the alignment, with stations becoming hubs of new development in the region.

Design of the rail corridor works (including the track, structure, and six new stations) is continuing throughout 2012 and into 2013. Construction on the Moreton Bay Rail Link will then begin in earnest, with the new rail line scheduled for delivery by late 2016.

Check out our website at www.moretonbayrail.qld.gov.au for more information.



Australian Government

Nation Building Program

